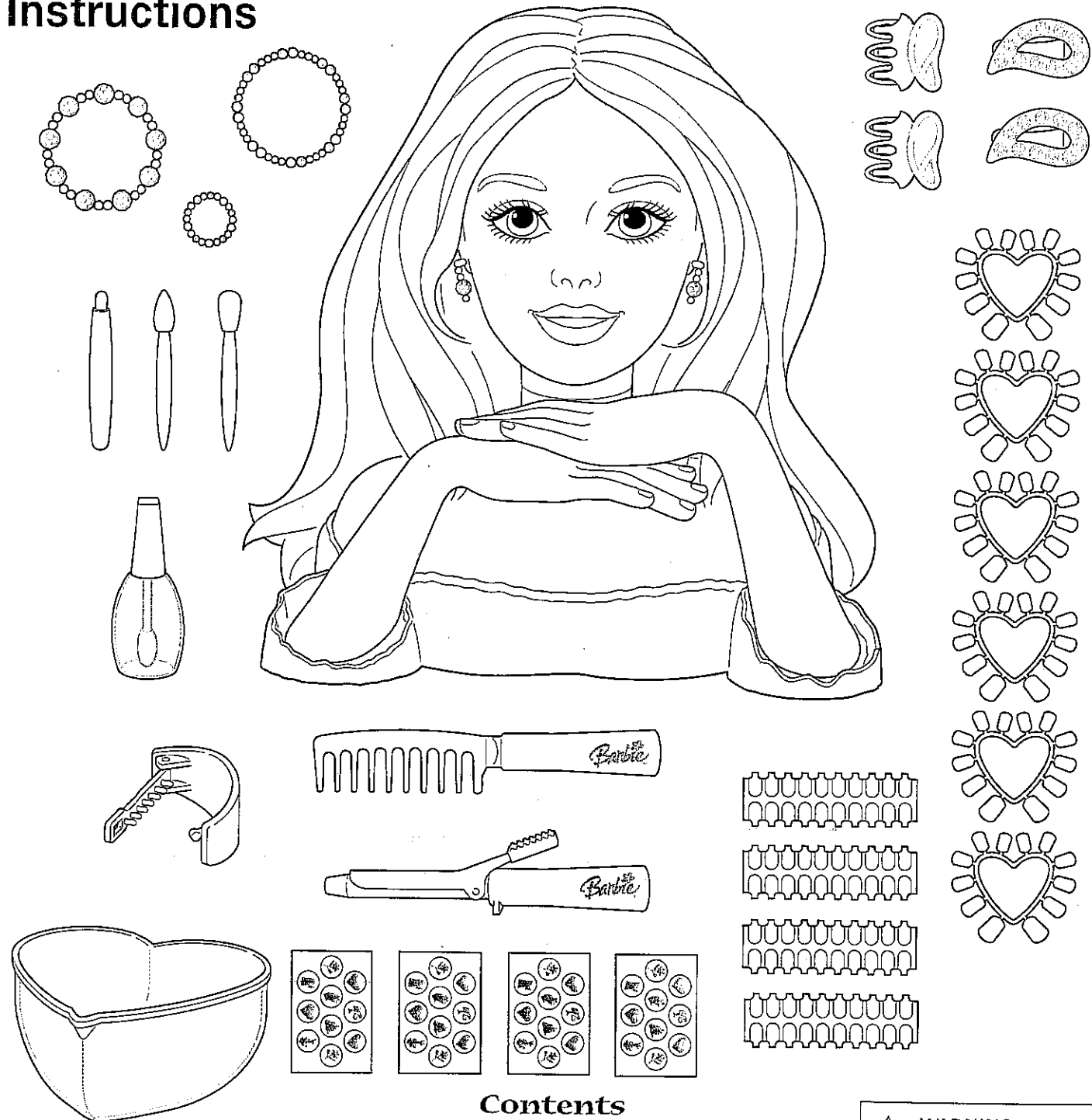


# Instructions



## Contents

**ADULT ASSISTANCE MAY BE REQUIRED.**

**SAFETY TESTED. GENTLE.**

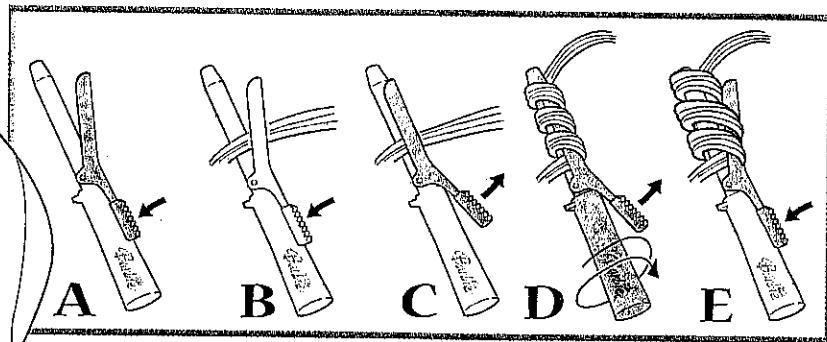
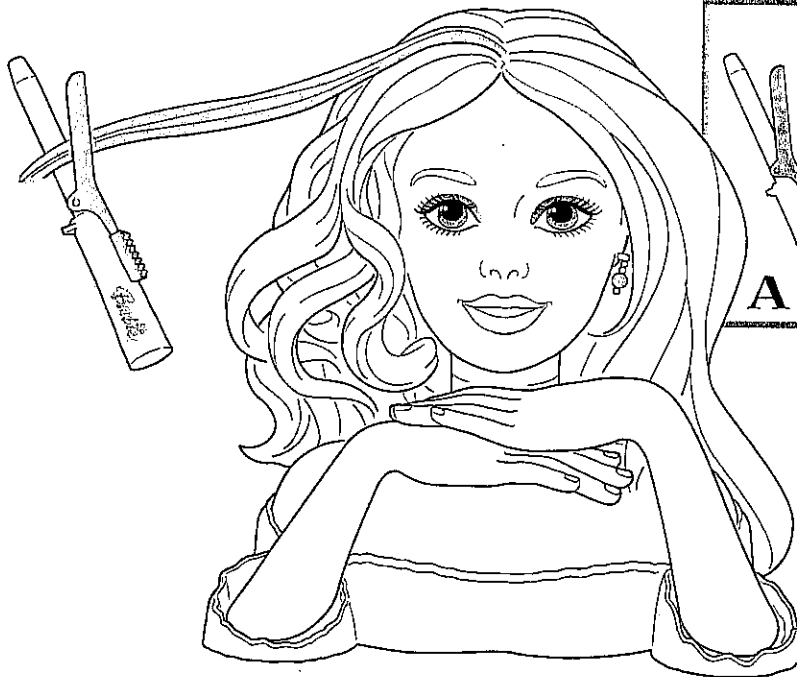
Colors and decorations may vary from those shown.

Please remove everything from the package and compare to the contents shown here. If any items are missing, please call 1-800-524-TOYS.

Keep these instructions for future reference as they contain important information.

**⚠ WARNING:**  
**CHOKING HAZARD** - Small parts.  
 Not for children under 3 years.

# Curl and straighten doll's hair!



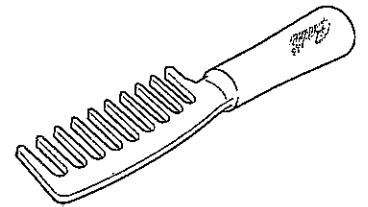
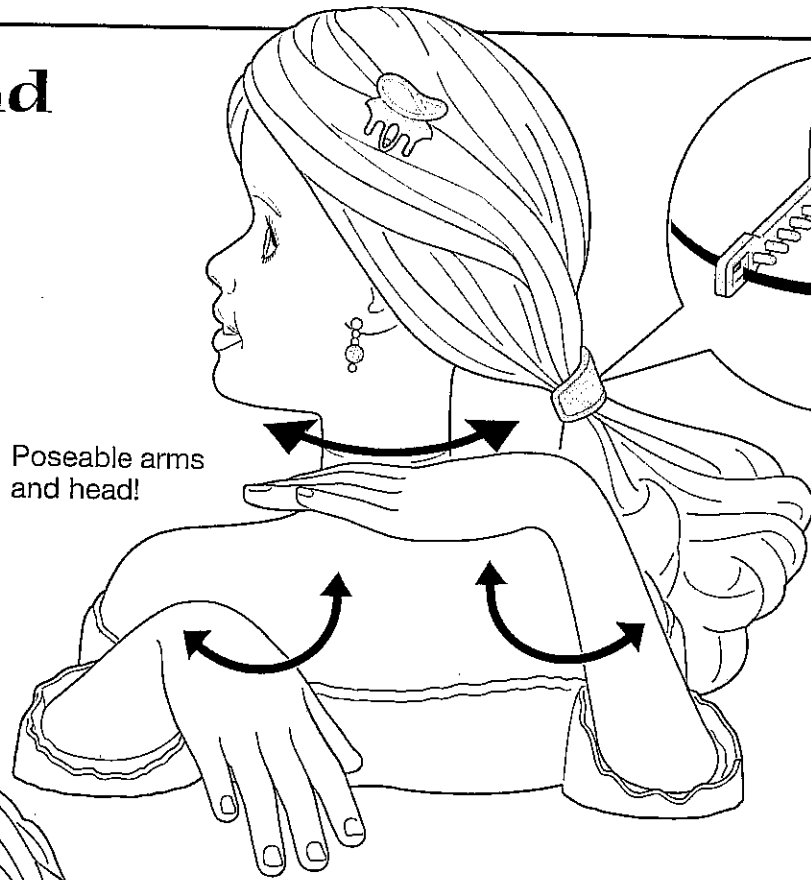
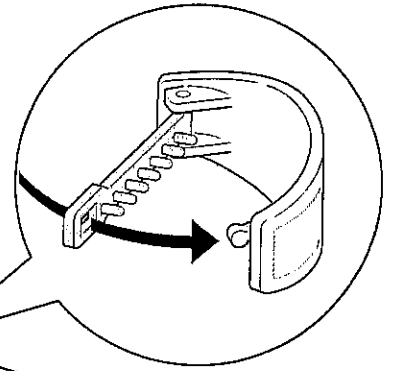
- A. PRESS handle (DOWN).
- B. Insert the end of a thin strand of hair.
- C. RELEASE handle (UP).
- D. ROLL curling iron towards doll's scalp to curl hair.
- E. PRESS handle (DOWN) to release hair.



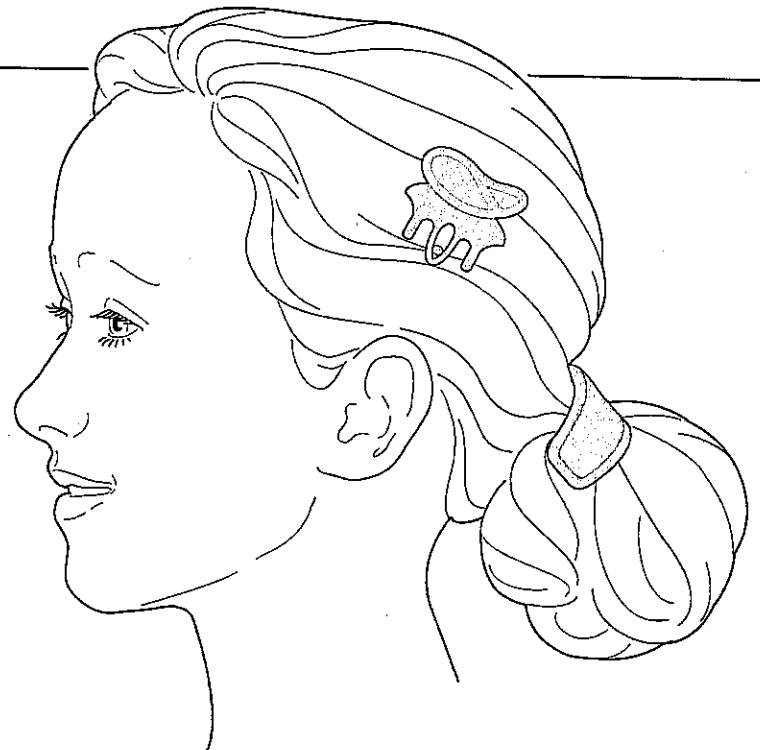
Comb out curls and start all over again!

**Use comb and  
barrettes to  
style doll's  
hair!**

Poseable arms  
and head!

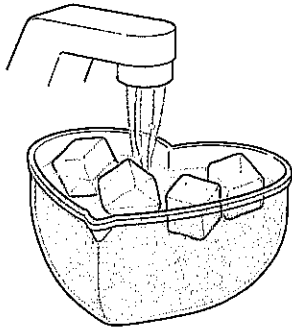


**...Or style your  
hair too!**

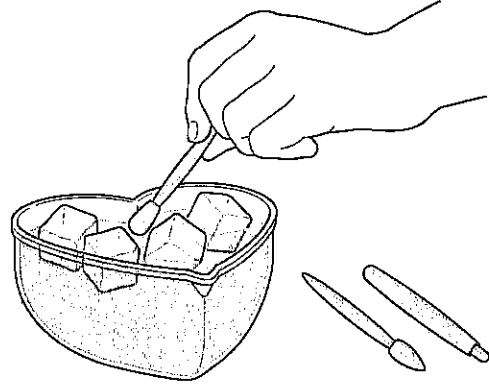


# Apply doll's make-up...

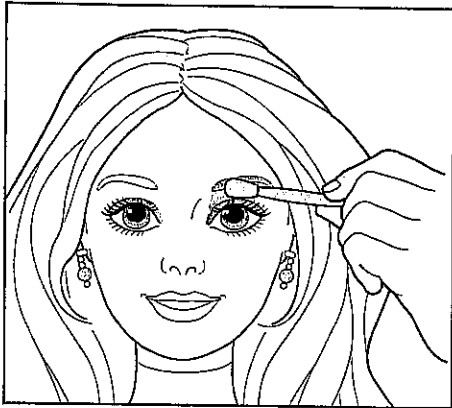
**IMPORTANT:** This is a water play toy. Do not use on surfaces that can be damaged by water. Water toys can be messy. Protect play area before use. Drain, clean and dry all items thoroughly before storing.



1. Place ice cubes in heart-shaped bowl. Fill with cool water.



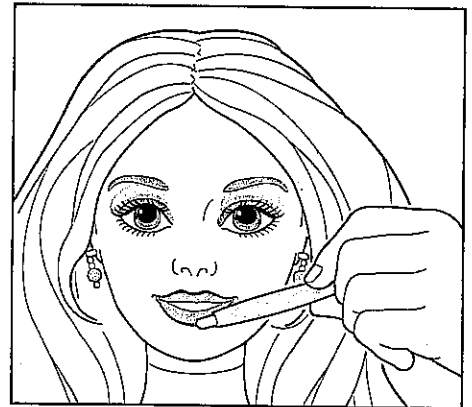
2. Dip applicator tips in **icy cold** water.



Apply **icy cold** water to doll's eyes. Eyeshadow appears!

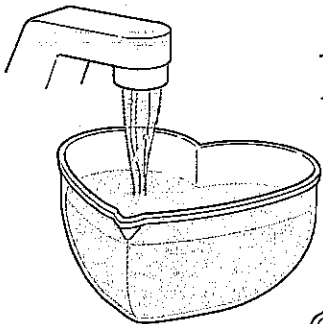


Apply **icy cold** water to her lips...

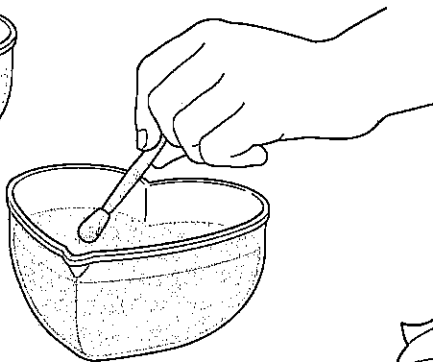


...or, around the edge of doll's lips to create an outline!

# Remove doll's make-up!



1. Fill heart-shaped bowl with **warm** (not hot) water.

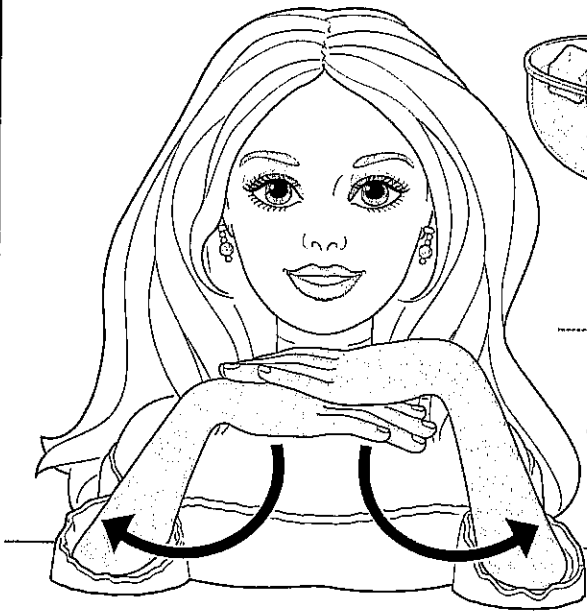


2. Dip applicator in **warm** water and apply to doll's eyes and lips. Make-up disappears!

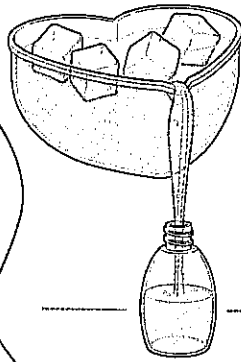
Color change will last longer if you do not expose this toy to intense heat or direct sunlight for prolonged periods of time.



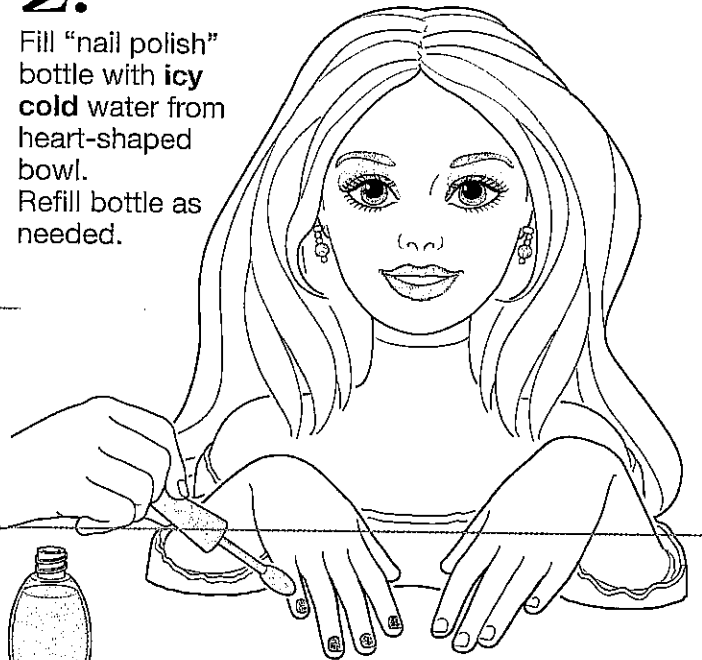
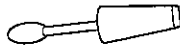
# Color-change doll's nails!



**1.** Swing doll's arms and hands down.

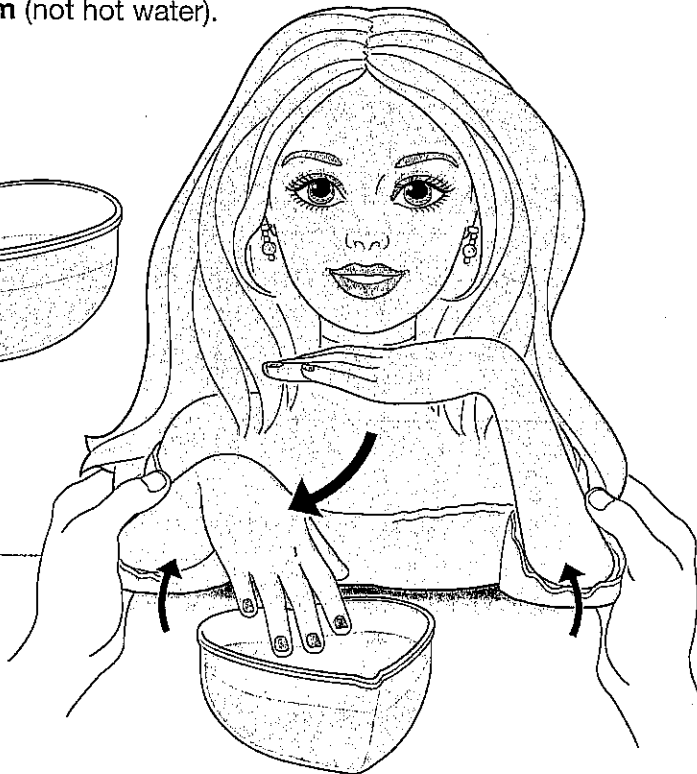
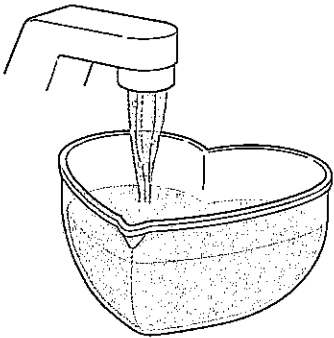


**2.** Fill "nail polish" bottle with **icy cold** water from heart-shaped bowl. Refill bottle as needed.

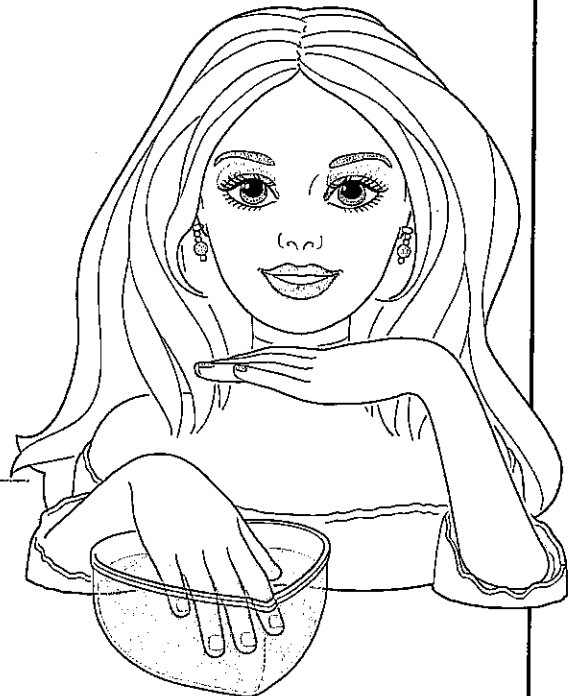


**3.** Apply **icy cold** water to doll's nails with applicator. Nails change color!

**1.** Fill heart-shaped bowl with **warm** (not hot) water.



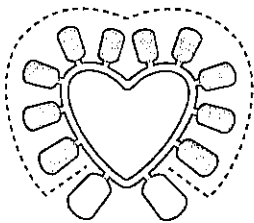
**2.** Lift doll **BACKWARDS**, then rotate doll's hands above the bowl.



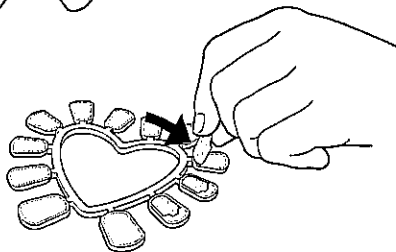
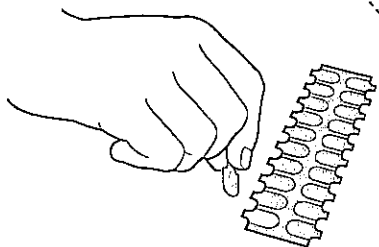
**3.** Lower doll **DOWN** so doll's fingernails are immersed into the water. Nails will return to their original color.

# ...Or add stick-on play nails!

for doll...

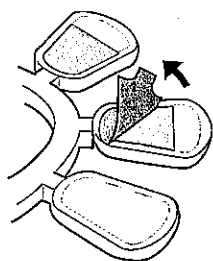
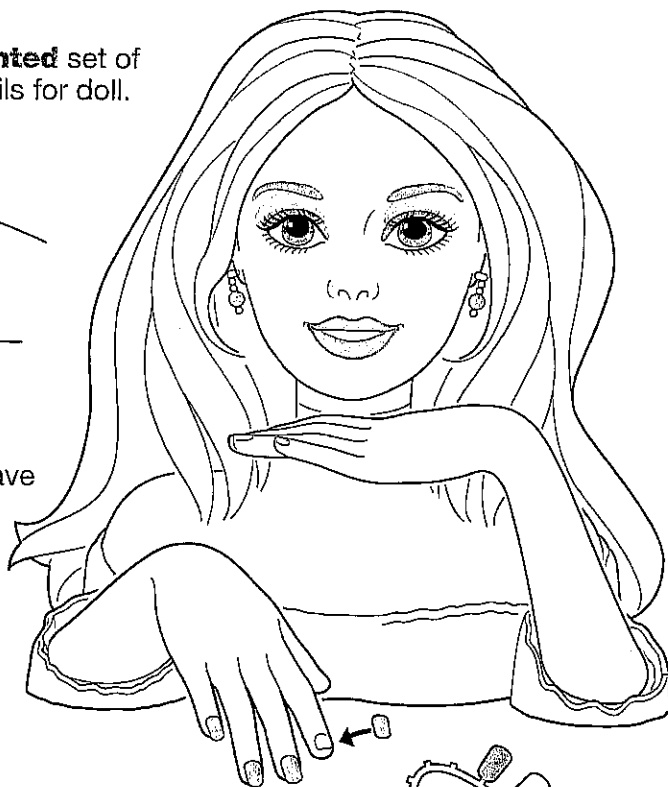


Use **highlighted** set of play fingernails for doll.



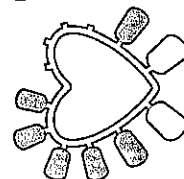
**1.** Remove adhesive sticker from sheet.

**2.** Attach sticker to concave side of play fingernail.



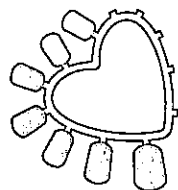
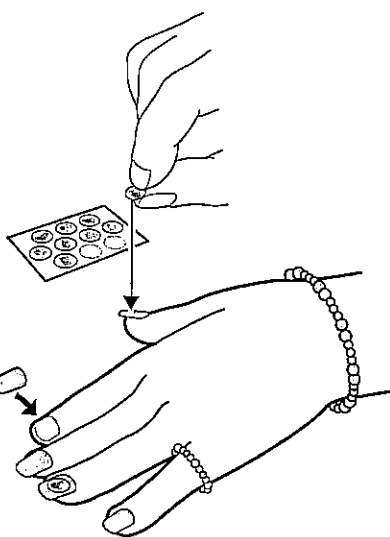
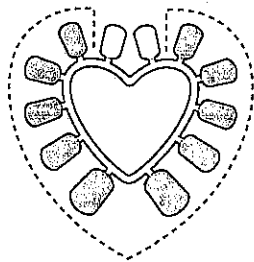
**3.** Remove paper backing.

**4.** Twist to remove play fingernails from holder and attach to doll's fingers.



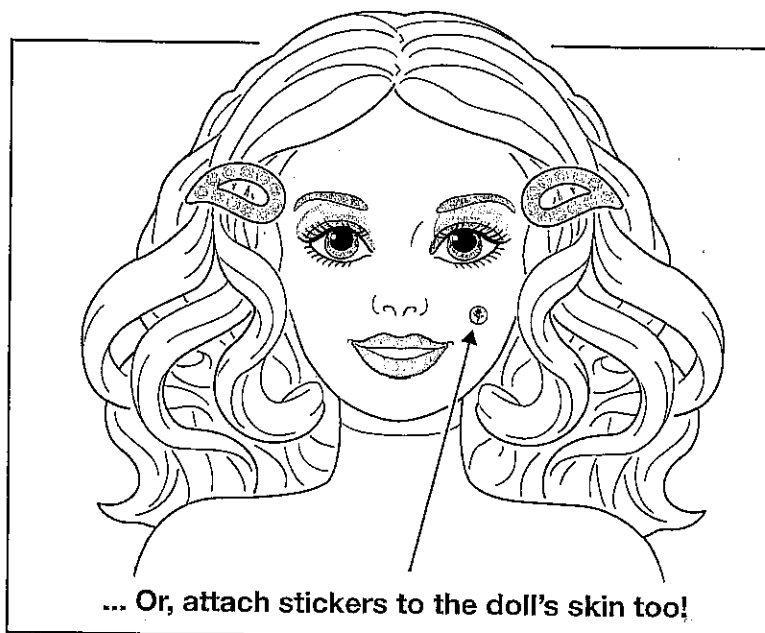
# ...or, for you!

Use **highlighted** set of play fingernails for your fingers.



Attach stickers to the play fingernails!

Doll's ring and bracelets fit you too!



... Or, attach stickers to the doll's skin too!

## Storage:

Drain, clean, rinse and dry all toy parts before storing.

## CONSUMER INFORMATION

YOU CAN TELL IT'S MATTEL!™ CALL us toll-free or write with any comments or questions about our products or service. Monday-Friday 8:00 a.m.-6:00 p.m. Eastern Time. Outside U.S.A., see telephone directory for Mattel listing.

Consumer Relations, Mattel, Inc.  
333 Continental Blvd.  
El Segundo, CA 90245 USA

1(800) 524-TOYS

WE ARE DEDICATED TO QUALITY PRODUCTS.